

# EFG WOODS



# CLEAN LINES & TIMELESS DESIGN



With thousands of beautiful chairs on the market it's difficult to choose. To manage balancing both variety and design when planning an entire office, it is essential to consider aesthetics and functionality.

EFG Woods has historically been a celebrated chair within our range.

Now, EFG Woods offers a whole family of seating with a clean, simple design and excellent seating comfort.

Choose EFG Woods when you are looking for a family of chairs for meetings or breaks, in a cohesive and sustainable design – suited to any office environment.

*Woods was designed by Steinar Hindenes a few years ago, with a desire to develop a chair with excellent seating comfort and in a clean and simple design.*

*The latest addition EFG Woods Club is a light and low armchair where the simple and clean lines follow. The chair is designed by Petter Knudsen, Anders Berg and Steinar Hindenes at KnudsenBergHindenes.*



*KnudsenBergHindenes*  
DESIGNER · EFG WOODS

# A SUSTAINABLE FAMILY



Just like all our products, EFG Woods and EFG Woods Club are designed and manufactured with a minimal environmental impact, and in accordance with the established Nordic furniture eco-labeling. Components mainly consist of recyclable material, all wood is FSC-certified, and we do not use any harmful chemicals. All our standard fabrics carry the EU-flower.

# ASSORTMENT

EFG Woods is available with two different back rest heights. 4-leg base or swivel base, with two different versions of optional steel armrests, round or flat. The flat armrest can be upholstered in fabric or leather. The swivel base is adjustable in height 400-495 mm, and equipped with a lockable swing mechanism.



HIGH BACK, 5-STAR BASE



MEDIUM BACK, 5-STAR BASE



HIGH BACK, 4-LEG BASE



MEDIUM BACK, 4-LEG BASE

EFG Woods Club is available with solid wooden ash base or with an aluminum swivel base. Flat steel armrest is optional for the swivel version. With or without upholstery.



CLUB

## MEASUREMENTS

VERSION	ARTICLE NUMBER	SEAT HEIGHT MM	ARMREST HEIGHT MM	WIDTH MM	HEIGHT MM	DEPTH MM	WEIGHT KG
HIGH BACK, 5-STAR BASE	WOODSH10	400-495	-	460	1100-1205	590	18,2
HIGH BACK, 5-STAR BASE, ROUND ARM	WOODSH11	400-495	635-740	500	1100-1205	590	19,2
HIGH BACK, 5-STAR BASE, FLAT ARM	WOODSH12,14,15	400-495	635-740	535	1100-1205	590	19,2
MEDIUM BACK, 5-STAR BASE	WOODSM10	400-495	-	460	920-1025	570	15,2
MEDIUM BACK, 5-STAR BASE, ROUND ARM	WOODSM11	400-495	635-740	500	920-1025	570	16,2
MEDIUM BACK, 5-STAR BASE, FLAT ARM	WOODSM12,14,15	400-495	635-740	535	920-1025	570	16,2
HIGH BACK, 4-LEG BASE	WOODSH20	410	-	490	1100	620	15,2
HIGH BACK, 4-LEG BASE, ROUND ARM	WOODSH21	410	667	490	1100	620	16,2
HIGH BACK, 4-LEG BASE, FLAT ARM	WOODSH22,24,25	410	667	490	1100	620	16,2
MEDIUM BACK, 4-LEG BASE	WOODSM20	410	-	490	915	590	7,4
MEDIUM BACK, 4-LEG BASE, ROUND ARM	WOODSM21	410	667	490	915	590	10,8
MEDIUM BACK, 4-LEG BASE, FLAT ARM	WOODSM22,24,25	410	667	490	915	590	10,8
CLUB, WOODEN BASE	WOODSC40	355	-	610	820	700	10,6
CLUB, SWIVEL BASE	WOODSC50	360	-	600	820	700	12,2
CLUB, SWIVEL BASE, FLAT ARM	WOODSC52,54,55	360	585	600	820	700	15,6

TESTS: EFG Woods and EFG Woods Club are tested according to EN 16139 level 1, EN 1728, and EN 1022. Certified in accordance with the established Nordic furniture eco-labeling. FSC-certified wood.





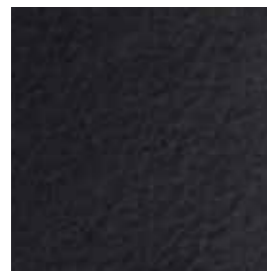
# 94 DIFFERENT KINDS OF STANDARD FABRICS ARE ONLY A FEW OPTIONS

When you choose a chair from the EFG Woods family you are presented with a seemingly endless number of standard colours, material and seat shells that will help you create a truly personalised work environment. And should you wish for an even more customised profile we also offer the opportunity to order specially adapted colours and material.

## ARMREST AND BASE

### STANDARD FINISHES

#### 4-LEG BASE AND ARMRESTS



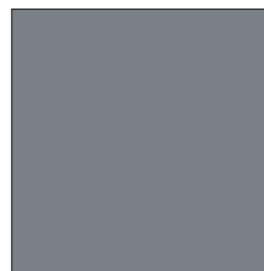
METAL - 52 BLACK



METAL - 53 WHITE



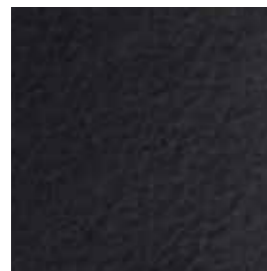
METAL - 90 CROME



METAL - 26 GREY

### STANDARD FINISHES

#### 5-STAR BASE AND ARMRESTS



METAL - 52 BLACK



METAL - 53 WHITE



METAL  
- POLISHED ALUMINIUM (BASE)  
- 90 CROME (ARMRESTS)

### STANDARD FINISHES

#### CLUB SWIVEL BASE



METAL  
- POLISHED ALUMINIUM (BASE)  
- 90 CROME (ARMRESTS)

### STANDARD FINISHES

#### CLUB WOODEN BASE



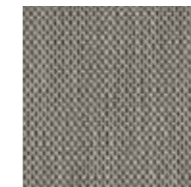
WOOD - ASH NATURAL - A1



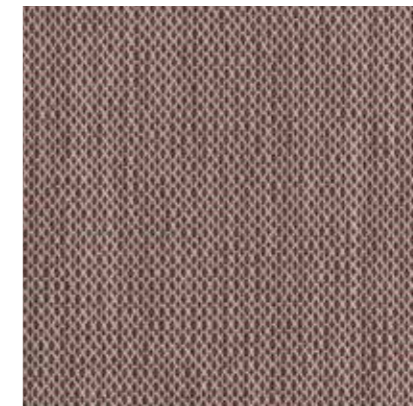
WOOD - ASH BLACK STAINED - AS

## SEAT, BACK AND ARMRESTS

This is a small selection of our standard fabrics. Please see [www.efg.info](http://www.efg.info) for full assortment. All our standard fabrics carry the EU-flower.



CRISS CROSS - 01101



CRISS CROSS - 01103



CRISS CROSS - 014501



NOTE - 60088



NOTE - 61125



CRISS CROSS - 02201



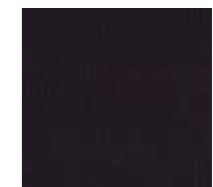
NOTE - 64019



NOTE - 66071



REMI X - 682



REMI X - 692



STEEL CUT - 845



STEEL CUT - 933



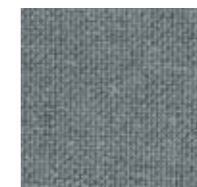
STEEL CUT - 533



REMI X - 823



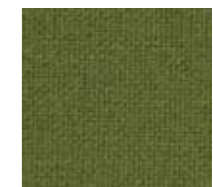
REMI X - 973



TWIST MELANGE - 60076



TWIST MELANGE - 67004



TWIST MELANGE - 68119

# IT'S ALL IN THE DETAILS...



ALUMINIUM MECHANISM.  
12 ° TILT ANGLE.  
LOCKABLE IN UPRIGHT POSITION.



FLAT METAL ARMREST  
WITH UPHOLSTERY  
AS AN OPTION



ROUND METAL ARMREST



ASH BASE  
EFG WOODS CLUB

EFG (European Furniture Group) is a leading European supplier of flexible interior solutions for offices and public environments with added values that build image and increase performance. EFG meets unique demands and needs by offering a complete range of furniture with design, sustainability and flexibility in focus. EFG is represented all over Sweden and in major parts of Europe.

[www.efg.info](http://www.efg.info)

